



HornImpex

HOME DECOR CATALOGUE

Discover the elegance of handcrafted buffalo horn and bone home décor, made in Sambhal, India—a city renowned for its artisanal mastery. Our collection combines traditional craftsmanship with modern design, offering sustainable and eco-friendly decorative items for global buyers. From tabletop and kitchenware to wall décor, lighting, furniture accents, and outdoor sculptures, each piece is carefully polished and carved to perfection. Trusted by clients in the United States, United Kingdom, European Union, Middle East, Australia, and Canada, our products meet stringent quality and export standards. Whether for retail, wholesale, or corporate gifting, HornImpex delivers exceptional buffalo horn and bone décor that elevates any space with timeless artistry.

ABOUT HORNIMPEX - TRUSTED BUFFALO HORN AND BONE MANUFACTURER & EXPORTER FROM INDIA

HornImpex, based in Sambhal, Uttar Pradesh, stands as one of India's most trusted manufacturers and exporters of buffalo horn and bone raw materials and handcrafted products.

As a proud brand of Hornandbonecare, we bring together traditional artistry, sustainable practices, and modern export standards to deliver products that reflect natural beauty and ethical craftsmanship. With over two decades of experience, HornImpex has built a strong global presence, supplying high-quality buffalo horn and bone sheets, buttons, beads, cutlery, jewelry, combs, and décor items to buyers across the USA, UK, Europe, and the Middle East.

Our products are valued for their durability, aesthetic appeal, and eco-friendly nature, making them ideal for wholesalers, retailers, and industrial users. At HornImpex, we believe in creating a bridge between India's artisan heritage and the global demand for sustainable, natural materials.

Each piece we produce is handcrafted from ethically sourced buffalo horn and bone — a by-product of the meat industry — ensuring no animal harm and zero waste during production.

Driven by quality, sustainability, and craftsmanship, HornImpex continues to promote the timeless elegance of horn and bone while supporting local artisans and global eco-conscious trade.

Handmade Bone Inlay Tissue Box Holder - Indian Export Quality Decor

Introduction Crafted by skilled artisans in Sambhal, India, this Handmade Bone Inlay Tissue Box Holder by HornImpex combines timeless artistry with contemporary home elegance.... [View more detail](#)

Product Specifications

SKU

HRMX-167



HornImpex

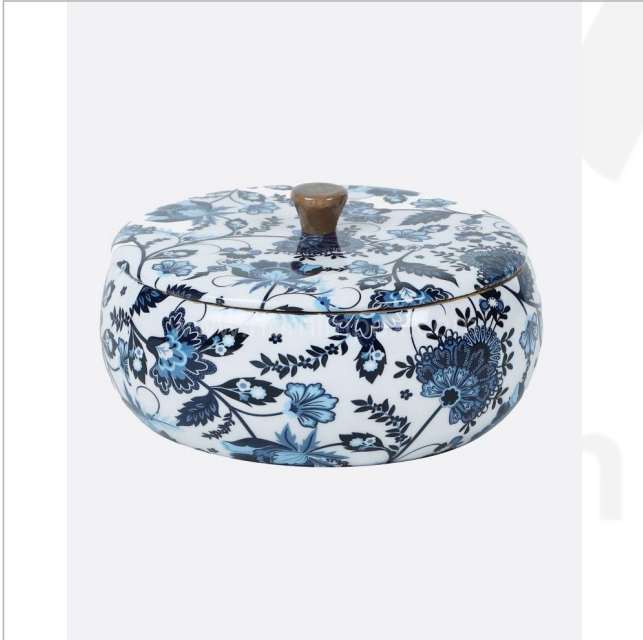
Handmade Bone Decorative Storage Box - Custom Export Quality

Introduction Crafted with precision and artistry, our Handmade Bone Decorative Storage Box is an exquisite blend of traditional craftsmanship and modern design. Made from ethically sourced bone and horn, this piece showcases the elegance of ... [View more detail](#)

Product Specifications

SKU

HRMX-170



Rectangular Horn Jewellery Box - 8 Inch (Polished Resin, Check Pattern)

The Rectangular Horn Jewellery Box by Horn Impex is a beautifully handcrafted piece designed for elegance and utility. Crafted from high-quality resin with a horn-inspired look, this box is polished to perfection, giving it a luxurious finish.... [View more detail](#)

Product Specifications

SKU

HRMX-188



HornImpex

Handcrafted Mosaic Photo Frame - Black & White Horn Bone Design

Introduction Each Handcrafted Mosaic Photo Frame – Black & White Pattern by HornImpex is a timeless piece of Indian craftsmanship, blending traditional artistry with contemporary aesthetics. Expertly handcraft... [View more detail](#)

Product Specifications

SKU

HRMX-192



HornImpex

Handcrafted Bone & Brass Napkin Ring - Natural Material - Luxury Table Décor | HornImpex

Elevate your dining experience with this Bone & Brass Napkin Ring, a luxurious fusion of nature and craftsmanship by HornImpex. Each ring is meticulously handmade using ethically sourced natural bone and ... [View more detail](#)

Product Specifications

SKU HRMX-198



HornImpex

Handmade Bone and Horn Inlay Storage Box - Antique Decorative Keepsake Jar with Lid

Elevate your home décor with this exquisite Handmade Bone and Horn Inlay Storage Box from HornImpex. Crafted by skilled artisans, this unique keepsake jar showcases a beautifully detailed ribbed design, complete with a matching lid and knob handle.... [View more detail](#)

Product Specifications

SKU

HRMX-207



Handmade Bone Inlay Round Coffee Table - Geometric Pattern Modern Accent Furniture

Bring elegance and artisan craftsmanship into your living space with this Handmade Bone Inlay Round Coffee Table by HornImpex. Featuring a striking geometric cube pattern, this modern accent table is crafted with preci... [View more detail](#)

Product Specifications

SKU

HRMX-208



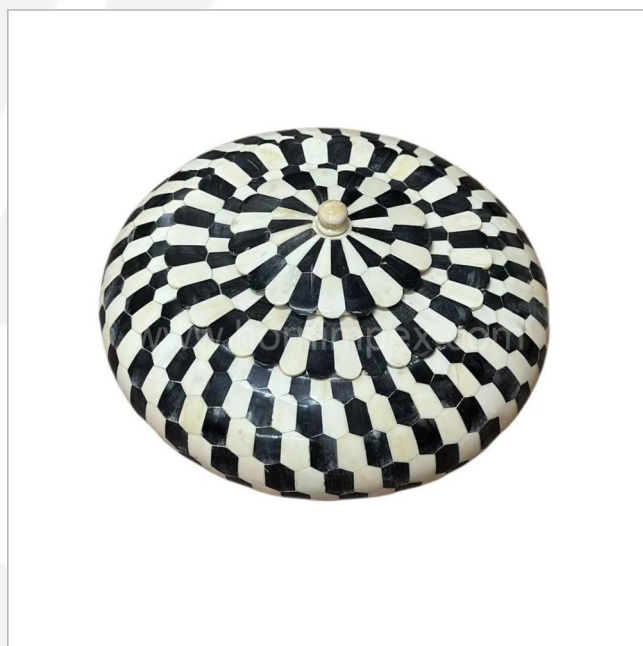
Handmade Geometric Pattern Inlay Lidded Decorative Box

... [View more detail](#)

Product Specifications

SKU

HRMX-209



Handmade Floral Bone Inlay Rectangular Decorative Box with Lid (Black & Cream)

... [View more detail](#)

Product Specifications

SKU

HRMX-210



Handmade Natural Bone Inlay Round Lidded Box | Minimalist Floral Accent Decor | HornImpex

... [View more detail](#)

Product Specifications

SKU

HRMX-212



Handcrafted Green Geometric Bone Inlay Photo Frame - Sambhal Exporter

Showcase your memories in exquisite artisanal style. This Green & White Geometric Bone Inlay Photo Frame features a striking diamond pattern meticulously handcrafted by skilled artisans in Sambhal, Uttar Pradesh. Perfect for adding a touch of luxury home decor and a unique cultural accent to any table or shelf. Elevate Your Home with Sambhal's Finest Handicrafts From HornImpex, ... [View more detail](#)

Product Specifications

SKU HRMX-253



Horn & Bone Inlay Wooden Tissue Box Cover - Floral Design Handmade in Sambhal, UP

Authentic Sambhal Horn and Bone Inlay Tissue Box Cover Elevate your home decor with this exquisite Floral Wooden Tissue Box Cover, meticulously handcrafted by master artisans in Sambhal, Uttar Pradesh, the hub for exquisite horn and bone handicrafts in India. As manufacturers and exporters, HornImpex brings you a piece that perfectly blends traditional Indian artistry with modern ut... [View more detail](#)

Product Specifications

SKU HRMX-256



HornImpex

Handcrafted Black Mother of Pearl & Bone Inlay Square Tissue Box Cover | Authentic Indian Home Decor

Elevate Your Space with Authentic Sambhal Craftsmanship Discover the elegance of genuine Indian artistry with this exquisite Black Mother of Pearl & Bone Inlay Tissue Box Cover, meticulously handcrafted by HornImpex artisans in Sambhal, Uttar Pradesh, India. This stunning piece is more than just a functional item; it's a statement of sophistication, reflecting centuries-old bone inl... [View more detail](#)

Product Specifications

SKU HRMX-257



Luxurious Black & White Bone Inlay Side Table | Sunburst Pattern | HornImpex

Elevate your home décor with this exquisite Black and White Sunburst Horn/Bone Inlay Round Side Table. This piece is a stunning example of traditional Indian inlay artistry, combining luxury materials with a striking, geometric design. The round tabletop features meticulously handcrafted pieces of ethically sourced natural horn and/or bone... [View more detail](#)

Product Specifications

SKU HRMX-260



Black & White Bone Inlay Striped Accent Table | HornImpex

Elevate your living space with our striking Black & White Bone Inlay Striped Accent Table. Handcrafted by skilled artisans in Sambhal, Uttar Pradesh, India, this unique piece embodies the exquisite tradition of Indian bone inlay furniture. The accent table features a mesmerizing monochromatic striped pattern across both the conical base and the circular tab... [View more detail](#)

Product Specifications

SKU HRMX-261



Handcrafted Black and White Stripe Bone Inlay Side Table | Sambhal Export Quality

Bring a touch of artisanal luxury to your home with this exquisite Handcrafted Bone Inlay Side Table. Manufactured and exported from Sambhal, Uttar Pradesh, India by HornImpex, this table showcases the finest traditions of Indian bone inlay craftsmanship. The table features a captivating geometric black and white stripe pattern, meticulously formed by se... [View more detail](#)

Product Specifications

SKU HRMX-262



White Marble Round Dining Table with Brass Base - Handmade by Indian Exporter

Crafted from premium natural white marble with a hand-polished finish, this round dining table by HornImpex features a sleek brass base that adds timeless elegance and durability. Each piece is handmade by skilled Indian artisans, combining classic craftsmanship with modern luxury. Designed for export-quality assurance, it suits premium homes, hotels, and restaur... [View more detail](#)

Product Specifications

SKU HRMX-295



Premium Handcrafted Horn Bottle - Handmade & Export Quality

Discover the elegance of HornImpex's Premium Handcrafted Horn Bottle, meticulously crafted from natural Indian horn. Each bottle is polished to perfection, reflecting centuries-old artisanal techniques from Sambhal, India. Ideal for wholesalers, exporters, and luxury gift markets, this eco-friendly bottle combines aesthetic appeal with function... [View more detail](#)

Product Specifications

SKU HRMX-307



HornImpex

Buy Handmade Ceramic Flower Vase - Red & White Floral Design

Elevate interiors with this handmade ceramic flower vase, featuring a vibrant red and white floral design. Crafted by skilled artisans in Sambhal, India, this vase combines durability with elegant aesthetics, making it perfect for ... [View more detail](#)

Product Specifications

SKU HRMX-330



HornImpex

Black & White Horn Inlay Decorative Jar - Handmade Checkered Design

IntroductionCrafted with precision by skilled artisans in Sambhal, India, this Black and White Horn Inlay Decorative Jar showcases the timeless elegance of Indian handicraft. Meticulously made from ethically ...
[View more detail](#)

Product Specifications

SKU HRMX-338



Handcrafted Buffalo Horn & Mother of Pearl Photo Frame - Sustainable Luxury Décor

Introduction Crafted by skilled artisans in Sambhal, India, this Handcrafted Buffalo Horn & Mother of Pearl Photo Frame blends natural elegance with sustainable artistry. Each frame is individually handmade using ethically sourced buffalo horn and lust... [View more detail](#)

Product Specifications

SKU

HRMX-341



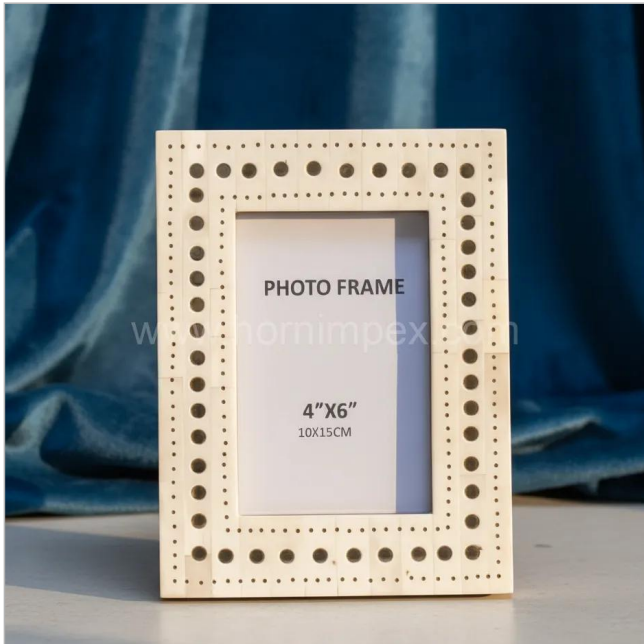
HornImpex

Handcrafted Bone Inlay Photo Frame with Horn Dots

Introduction Elevate your décor collection with the Handcrafted Bone Inlay Photo Frame with Horn Dot Pattern from HornImpex, a leading Indian manufacturer and exporter of luxury horn and bone handicrafts. Expertly cr... [View more detail](#)

Product Specifications

SKU HRMX-342



HornImpex

Handcrafted Bone Inlay Photo Frame - Black & White Geometric Design

Introduction Meticulously handcrafted by skilled artisans in Sambhal, India, this Handcrafted Bone Inlay Photo Frame showcases the timeless artistry and precision of Indian craftsmanship. Made using ethically sourced bone and high-quality resin, each frame r... [View more detail](#)

Product Specifications

SKU

HRMX-343



HornImpex

Handcrafted Bone Inlay Photo Frame Set - Black & White Collection

IntroductionThe Handcrafted Bone Inlay Photo Frame Set – Black & White Collection by HornImpex exemplifies the artistry, precision, and heritage of Indian craftsmanship. Each frame is individually handma... [View more detail](#)

Product Specifications

SKU HRMX-344



HornImpex

Handmade Blue Floral Bone Inlay Tissue Box - Indian Export Quality

Introduction Bring a touch of royal Indian artistry into your living space with this Handmade Blue Floral Bone Inlay Tissue Box by HornImpex. Expertly handcrafted by skilled artisans from ... [View more detail](#)

Product Specifications

SKU HRMX-345



HornImpex

Handmade Lotus Bone Inlay Tissue Box - Elegant Floral Decor Exported from India

Introduction Add an elegant accent to your interiors with the Handmade Lotus Bone Inlay Tissue Box by HornImpex. Crafted with precision and care by skilled Indian artisans, this exquisite piece blends ... [View more detail](#)

Product Specifications

SKU HRMX-346



HornImpex

Bone Inlay Resin Tissue Box - Handmade Decorative Tissue Holder

Introduction Discover timeless craftsmanship with HornImpex's Bone Inlay Resin Tissue Box, a stunning blend of Indian artistry and modern functionality. Handcrafted by skilled artisans in Sambhal, Uttar Pradesh, Indi... [View more detail](#)

Product Specifications

SKU

HRMX-347



HornImpex

Luxury Marble Look Resin Tissue Box - Handmade Black & Gold Holder

Introduction Elevate modern interiors with the Luxury Marble Look Resin Tissue Box by HornImpex, a handcrafted masterpiece that blends elegance with durability. Designed in ... [View more detail](#)

Product Specifications

SKU HRMX-348



HornImpex

Handcrafted Buffalo Horn Table Lamp - Sustainable Decorative Lighting

Introduction Bring natural elegance and artisan craftsmanship into your interiors with the Handcrafted Buffalo Horn Table Lamp by HornImpex, a trusted Indian exporter of premium horn and bone handicrafts. Each lamp is carefully handmade in Sambhal, India — the global hub for natural horn artistry — showcasing a perfect blend of traditional craftsmanship and modern home décor a... [View more detail](#)

Product Specifications

SKU HRMX-358



HornImpex

Handcrafted Buffalo Horn Table Lamp - Black Design, Wholesale Export

Introduction Discover the exquisite craftsmanship of HornImpex's Handcrafted Buffalo Horn Table Lamp in elegant black design. Each lamp is meticulously handmade by skilled artisans in Sambhal, India, using 100% natural buffalo horn. Known for its durability and unique texture, buffal... [View more detail](#)

Product Specifications

SKU HRMX-359



HornImpex

Wholesale Black & White Bone Inlay Dining Chair & Accent Side Table Set

Overview: The Sambhal Heritage Bone Inlay Furniture Collection... [View more detail](#)

Product Specifications

SKU

HRMX-419



Hexagon Inlay Buffalo Horn Tissue Box for Wholesale Buyers

This hexagon inlay buffalo horn tissue box is produced for buyers who need reliable bulk supply without sacrificing finish consistency or visual appeal. Manufactured in Sambhal, India, each piece combines natural buffalo horn and bone segments arranged in a clean geometric pattern, then resin-set and hand-polished. The result is a durable, export-ready décor accessory suited for premium retail, h... [View more detail](#)

Product Specifications

SKU	HRMX-503
Material	Buffalo Horn & Bone
Size	Approx. 24 × 13 × 9 cm
Color	Black, ivory, natural horn
Weight	Approx. 750-900 g
Finish	Hand-polished, lacquer sealed



Impex

Decorative Resin Tissue Holder for Wholesale Supply

This decorative resin tissue holder is developed for wholesale buyers looking to source visually appealing, stable, and export-ready tabletop accessories. Designed as a complete holder rather than a removable cover, it offers a solid structure with a smooth, polished surface and a distinctive marbled color pattern. Each unit is cast from resin and finished by hand, giving controlled consistency in... [View more detail](#)

Product Specifications

SKU	HRMX-504
Material	Resin
Size	Standard rectangular tissue holder (Custom Availabe)
Color	Multicolor marbled pattern
Weight	Approx. 600-800 g
Finish	High-gloss polished

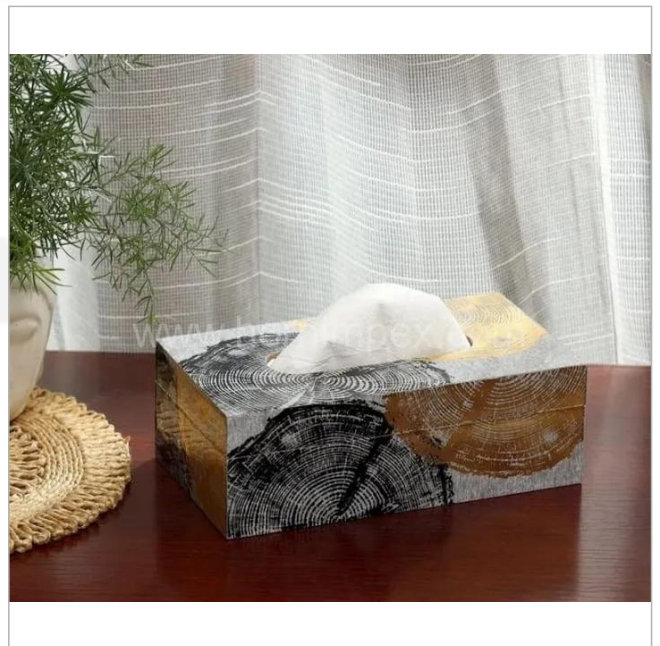


Resin Tissue Box Cover for Bulk Home Décor Orders

This resin tissue box cover is designed for contemporary home décor collections where visual texture and clean geometry matter. Crafted in solid cast resin, the box features an abstract, wood-grain inspired pattern with neutral black, white, and warm tan tones. The finish and form suit modern living rooms, bathrooms, hospitality interiors, and curated retail spaces. Built for bulk supply and pri... [View more detail](#)

Product Specifications

SKU	HRMX-505
Material	Cast Resin
Size	Standard rectangular tissue box size (Custom Available)
Color	Multicolor (black, white, tan abstract pattern)
Weight	Medium weight for tabletop stability
Finish	Smooth matte with sealed surface





HornImpex

Address:

Roza, Deepa Sarai, Sambhal, 244302, Uttar Pradesh, India

Email: info@hornimpex.com

Phone: +919259219172

Follow Us



www.hornimpex.com